

little nostrum



ion

s with

and

he

e

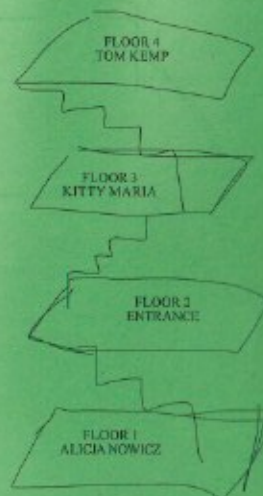
en

n

This
publication



contains interviews with
the organisation and
collaborators of the
artists. All of the
interviews were taken
by anna-rosja haveman
and vanessa van 't
hoogt.



S03E01: little nostrum, edition of 40 copies, black & white copy on colored paper (pearl gray, billiard green)
text: anna-rosja haveman and vanessa van 't hoogt, text correction: ruben jager, photo: het resort and the artists, design: allen de haan
former gay sauna, 't pubhuisje, schiedemakerstraat 17 groningen, februari 2020, www.betresort.nl



interview with het resort,
karina bakx / ellen de haan

about S03E01



b

a. outside, old situation, google maps screenshot / b. inside, old situation



a

For the third season of Het Resort you have occupied/squatted the former gay sauna: 't Pakhuisje. The sauna closed its doors on June 12th 2016. It had existed for 36 years and was cherished by many in the gay community in the North of the Netherlands. From the outside it was not easily recognizable as a sauna. Instead, it looked rather like an empty warehouse with its boarded-up windows, a rainbow flag being the only sign of a gay community for the outside world. What were the challenges and surprises of this location?

After two years of stalking the people that were developing the space — It will become part of the new museum on the "A" canal — we were able to do a project at the former gay sauna 't Pakhuisje for about nine months.



a



b

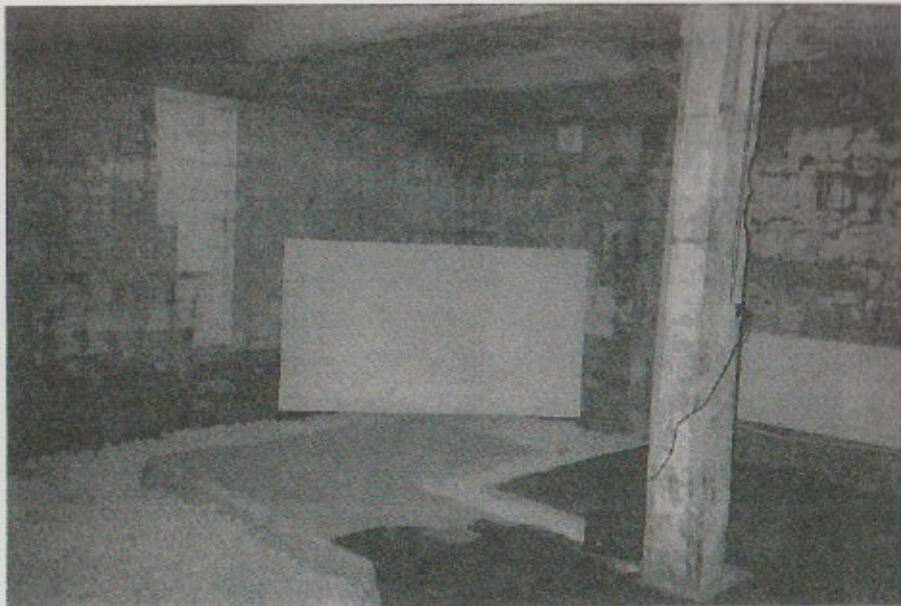


c

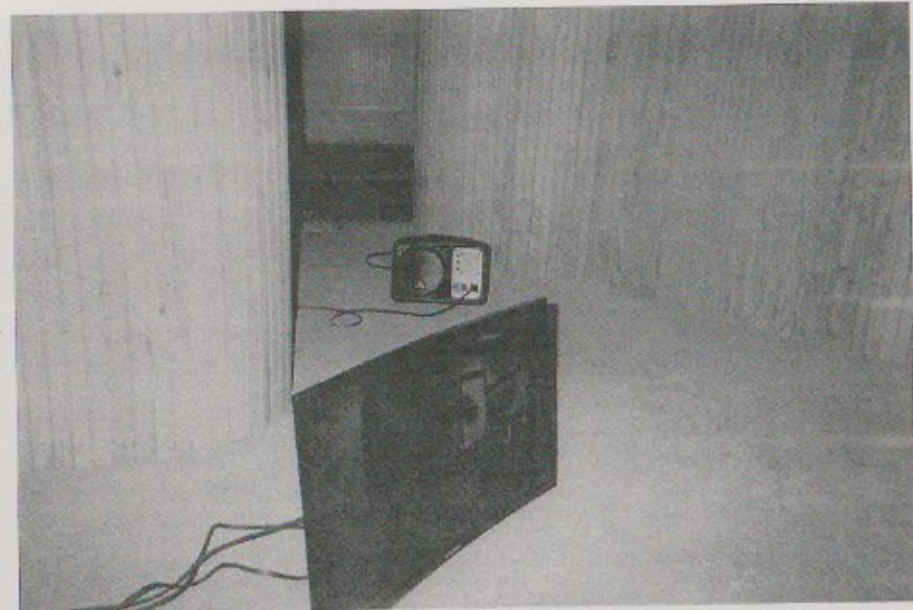


d

a. anna-rosja and vanessa talking to alicja / b. kitty and lee creating a work station / c. mc donalds and babies the day after the opening / d. alicja and tom checking something out



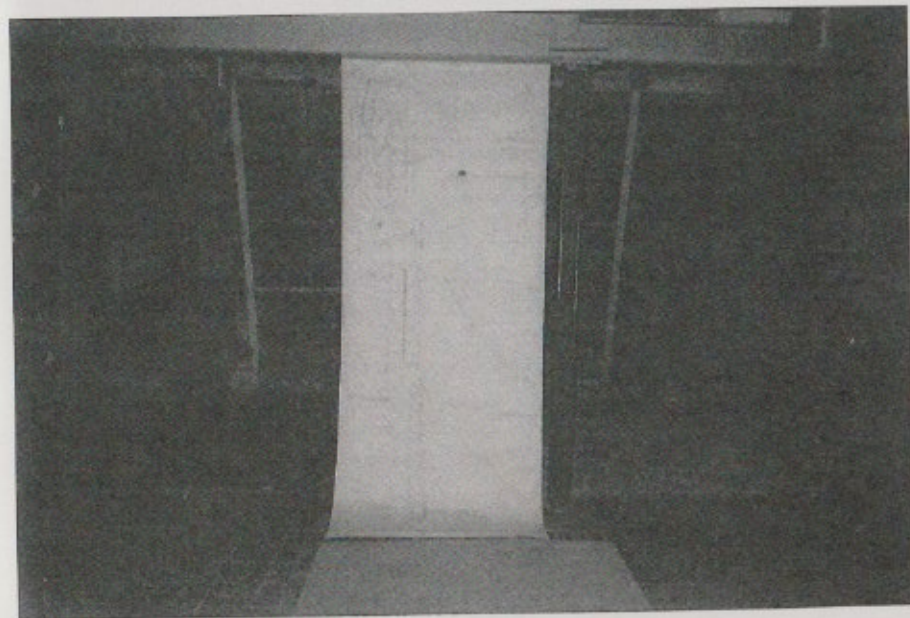
a



c



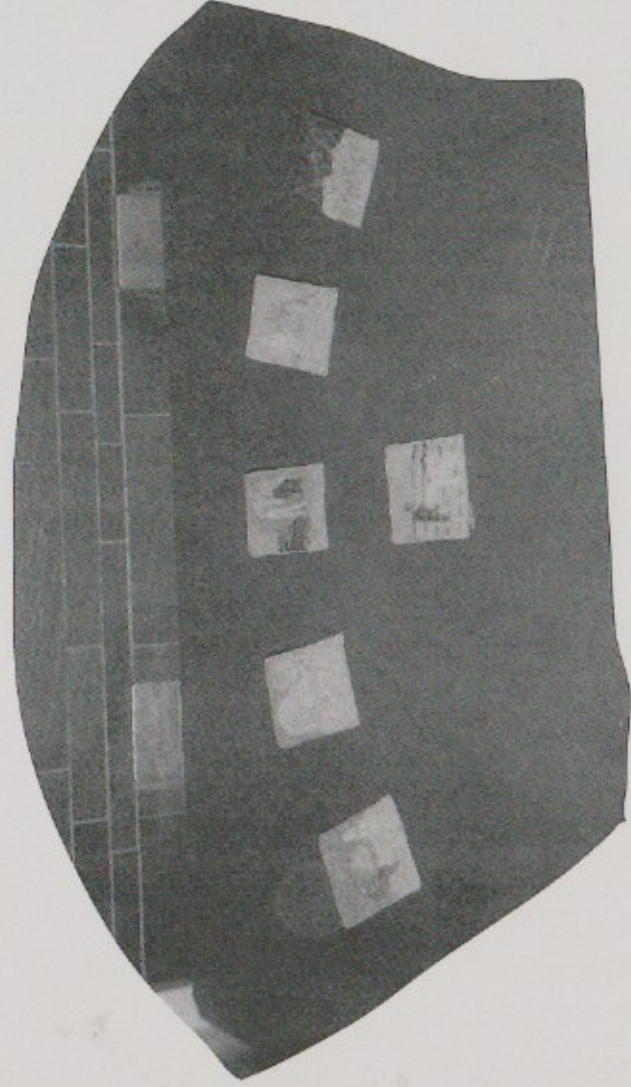
b



d

Alicja Nowicz (1988) is a visual artist and performer exploring attitudes, behaviours as well as cultural productions which are considered by the mainstream culture as provincial, parochial and embarrassing. She uses camp aesthetics to create alter-egos and installations in order to create situations hosting excluded attitudes and going beyond the codified behaviours revealing the superficiality of the main-stream order. She explores such themes as femininity, feminism, body, eastern-European identity and questions the role of an artist. She incorporates painting, drawings, ceramics and sculpture in her work.

ALICJA NOWICZ



interview with marc,

a regular visitor of the sauna and former designer of the website of 't Pakhuisje.

about alicja nowicz

16



a

How was meeting Beati (alter-ego Alicja Nowicz) and what is your impression of her artistic practice?

Getting to know Beati was very interesting. She and Tom came over for tea at my house, enjoying the woodstove. We chatted about the gay sauna, and the gay world in general, including the online community and dating sites. I told her some intimate stories and experiences, which she visualised in her drawings and tiles. It was very special to recognize my most private experiences in her



b



c

a. 'mapping pakhuisje', alicja nowicz, drawings / b+c. 'pakhuisje', alicja nowicz, video stills



a



b

artworks. I especially recognize myself in the drawings. For example, I had an experience with mushrooms and a heavenly massage in the jacuzzi. It was really nice to share my stories with Beati. Although, I did not realize that I would become part of the artwork. If I had, I would have worn a nicer sweater, cleaned my house and styled my hair for the video interview.

Did the project change your perspective on the sauna?

Because of the project, I now realize how important this sauna was for many people. After the unexpected closure of the sauna, I lost a whole group of people. It was not only about the sex, but it was a place to talk, a place where many friendships emerged. That suddenly disappeared. I also miss the free STD tests that were offered 4 times a year in collaboration with GGZ (Dutch health care).

How do you experience the building now?

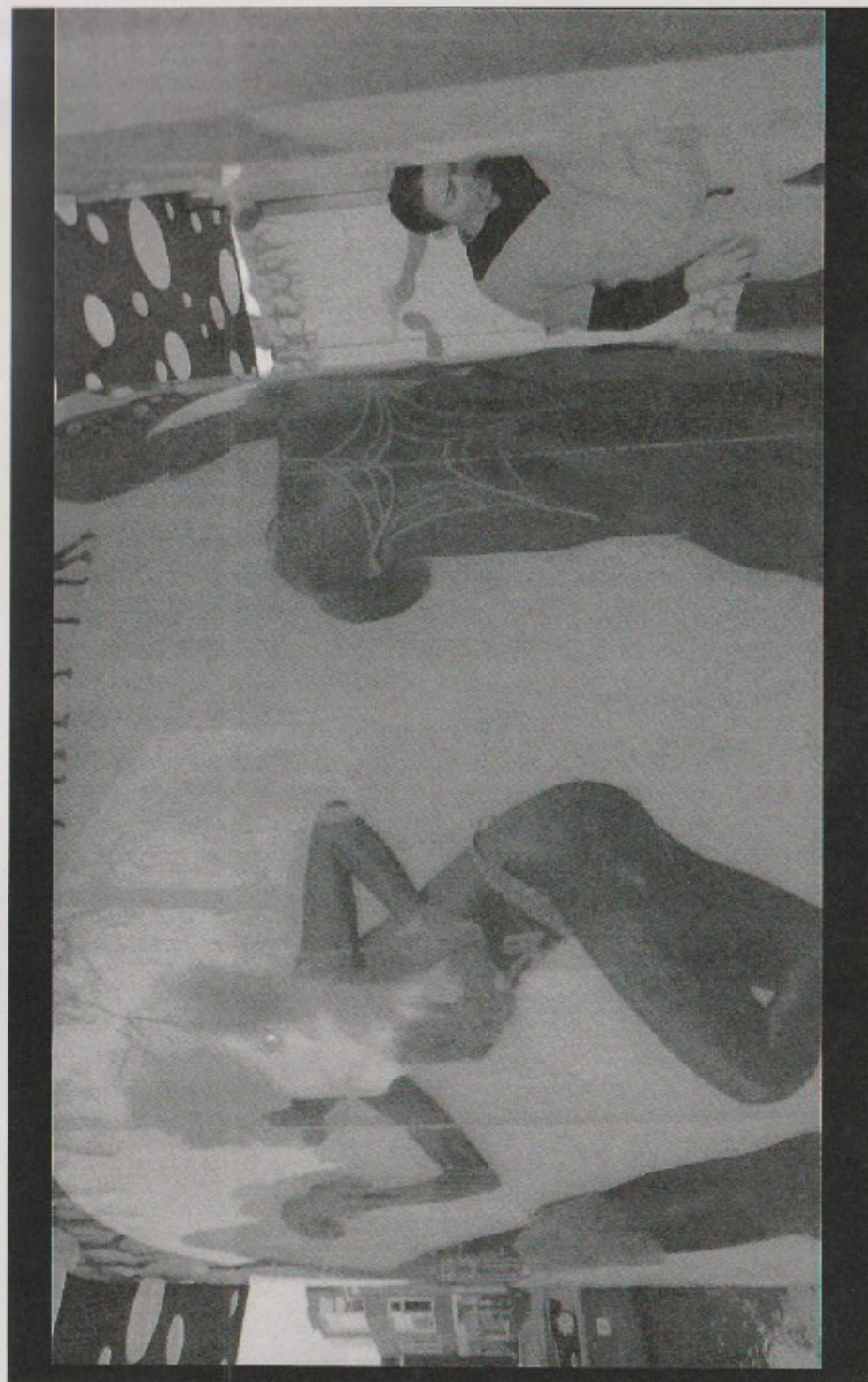
For me it was a very sad sight. It used to always be nice, warm and cozy. In the steam bath to relax and sweat, and..... Lots of good memories, I had that nice massage there. It was a place of warmth and cleanliness (most gays are very clean). Not only for me but also for

the other people. Especially in the winter period. I miss it a lot. I imagine the place is now very suitable and special as a studio and exhibition space for artists.

alicja nowicz

interview with

marc

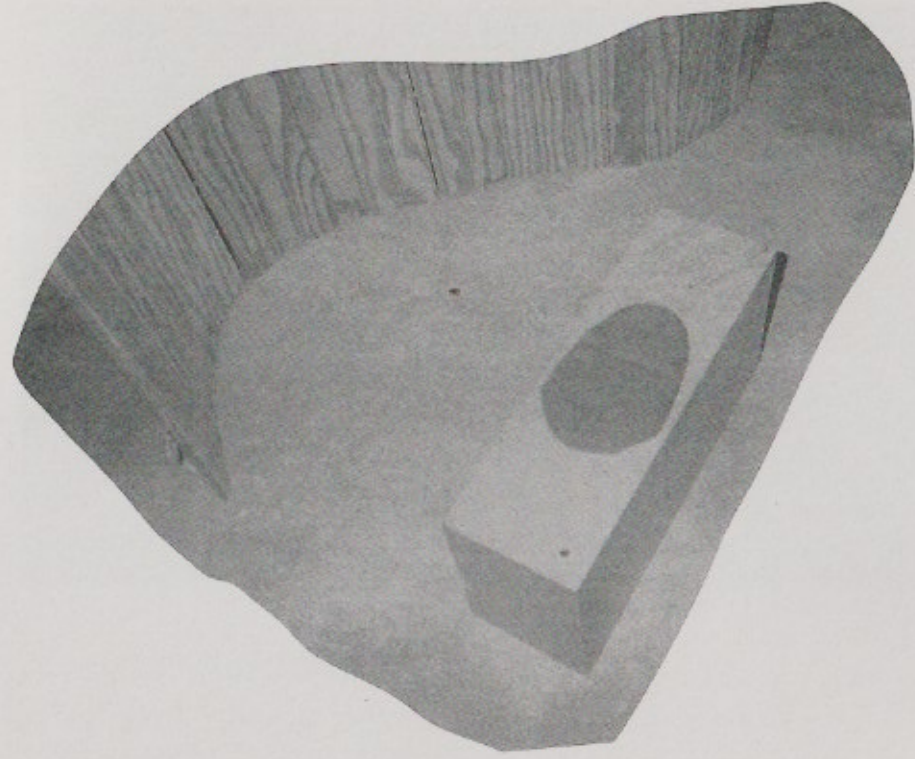


a

a. 'pakhuisje', alicja nowicz, video still

Kitty Maria's (1992) work consist of (video) performances and installations as an ongoing investigation into the automated production site and the new laborer. In the work she often befriend corporations or shops to intervene in places of labour or to submit to the production process herself. Classical subjects from the 'tradition' of performance art - physical endurance and the direct relationship to an audience - are echoed on a horizontal plane, while on a vertical plane a more ambiguous relationship is explored: the relationship between a natural person and a juridical person.

KITTY MARIA

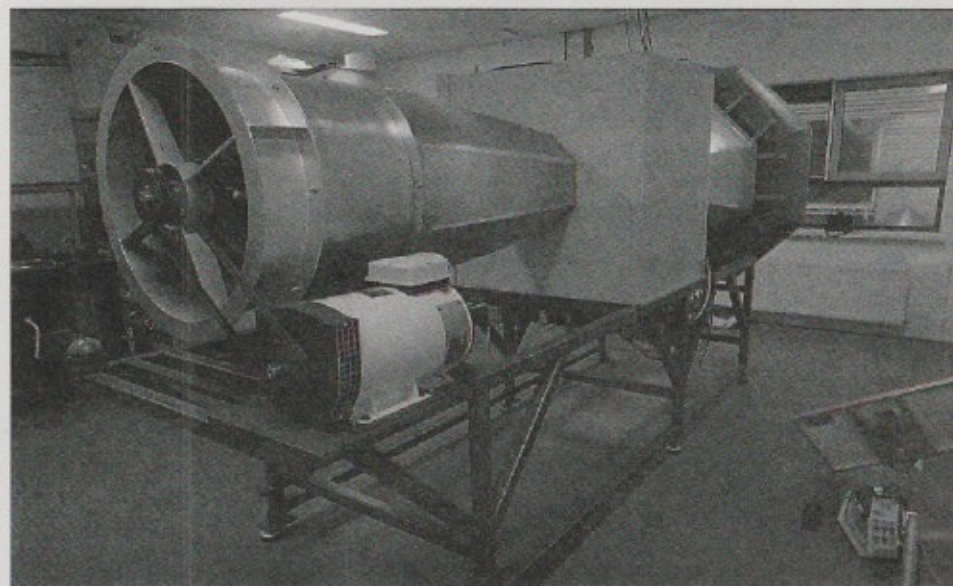


interview with windtunnel,
owned by delta ohm

26

about kitty maria

27

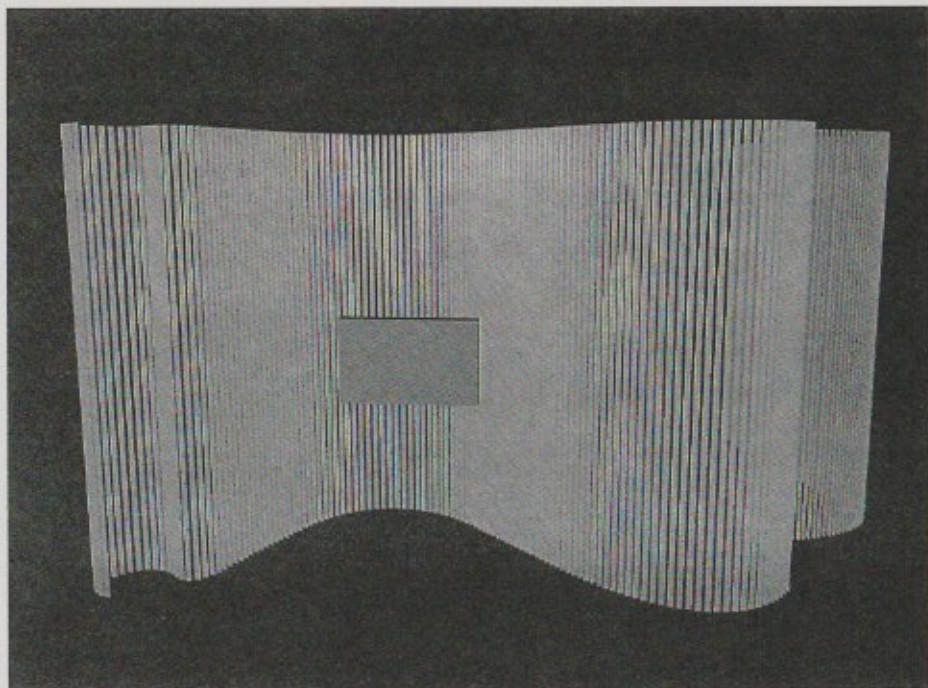


a

Could you describe yourself?

First of all, I have to make clear that I am not to be confused with the type of wind machines used for music performances, the type that ensures that Beyonce's hair always looks fabulous. I belong to a group of meteorological equipment, and my primary task is to calibrate the equipment as to match up with the highest standards. The calibration center I work for is accredited by ACCREDIA (formerly SIT) Centre No.124. With my abilities they are able to create certificates, which are subject to the international standards for traceability.

a. the windtunnel

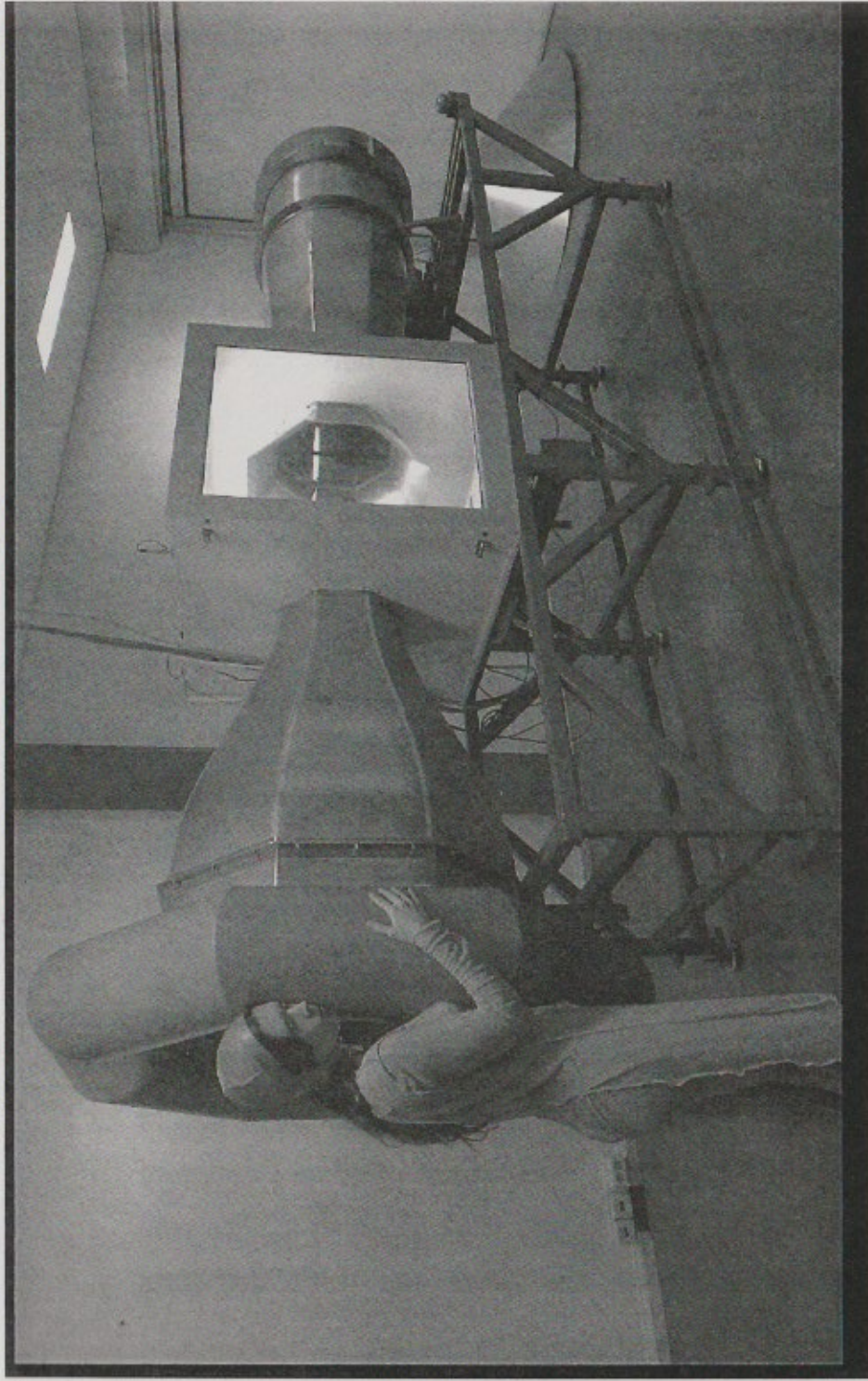


a

On request, I can perform calibrations on equipment from other brands. Delta OHM (the company that owns me) has merged with an Italian calibration center. Those Italians have a better machine. I am not called upon often. Sometimes they calibrate methodological equipment such as an industrial class anemometer. I am admired, but at the same time quite outshined by my Italian sibling. My mother, who resides at the KNMI (Royal Dutch Meteorological Institute) and from whom I have inherited my looks, is also way more popular. I am the inbetween machine.

How was meeting Kitty Maria and what is your impression of her artistic practice?

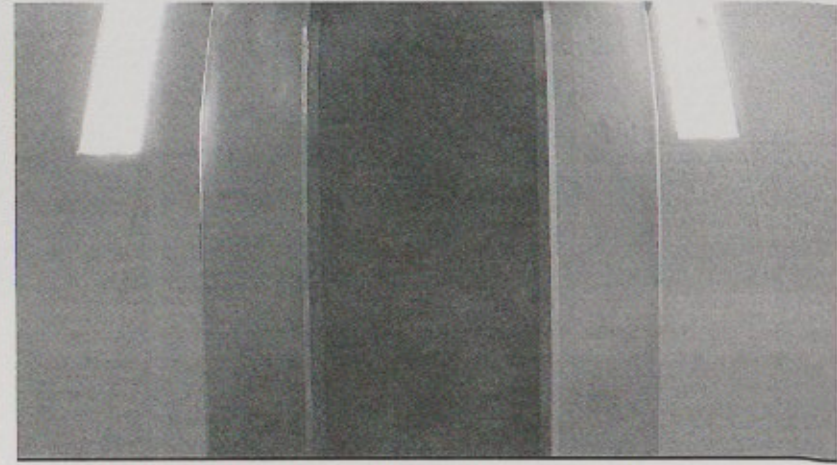
As previously described I am not that busy or admired in my daily life. The mechanics touch me only briefly when necessary, and only on the dedicated spots. Hardly ever does someone gently tickle me with affection, or even hurt me. My internal system is too valuable, that's why they treat me with distance. With Kitty it was different. The first time I met her I recognized a lot of myself in her and in the materials she brought with her. I dream of the weather that I help to predict, yet I never feel the rain or hear thunderstorms. She showed me a bit of the world through sounds.



30



b



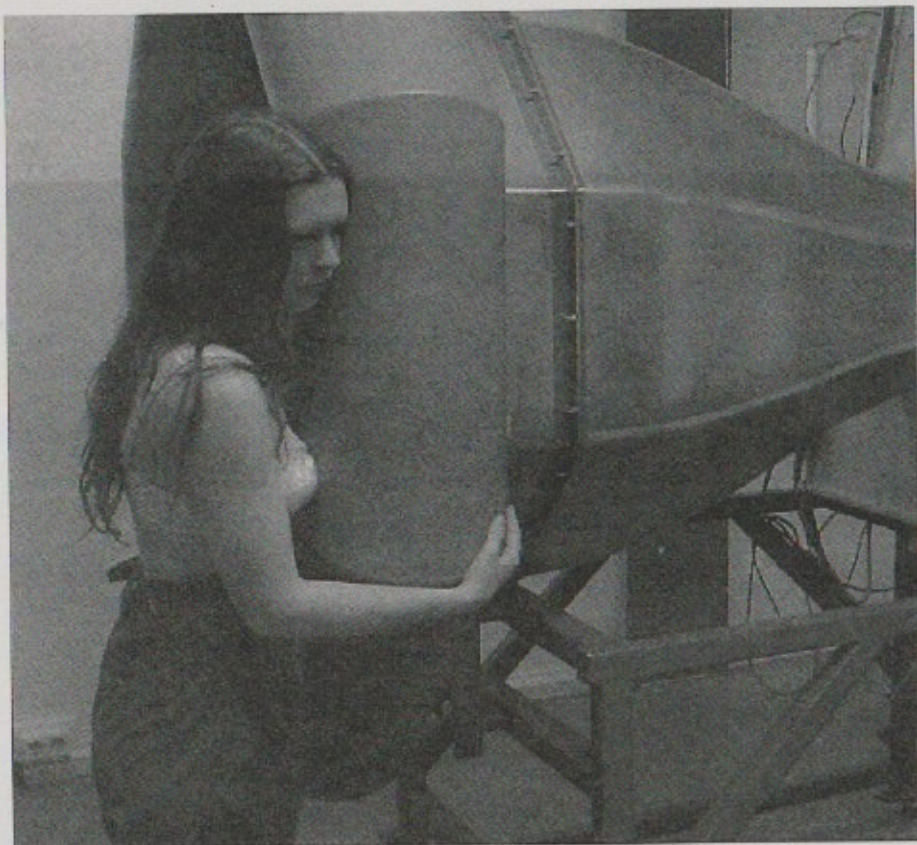
c

a. - c. 'access modes for encountering large industrial bodies', kitty maria, video stills

31

How was the participation in the art project for you? 32

The second time we met was very intimate. Nobody ever dresses up for me, or touches me longer than necessary. I felt

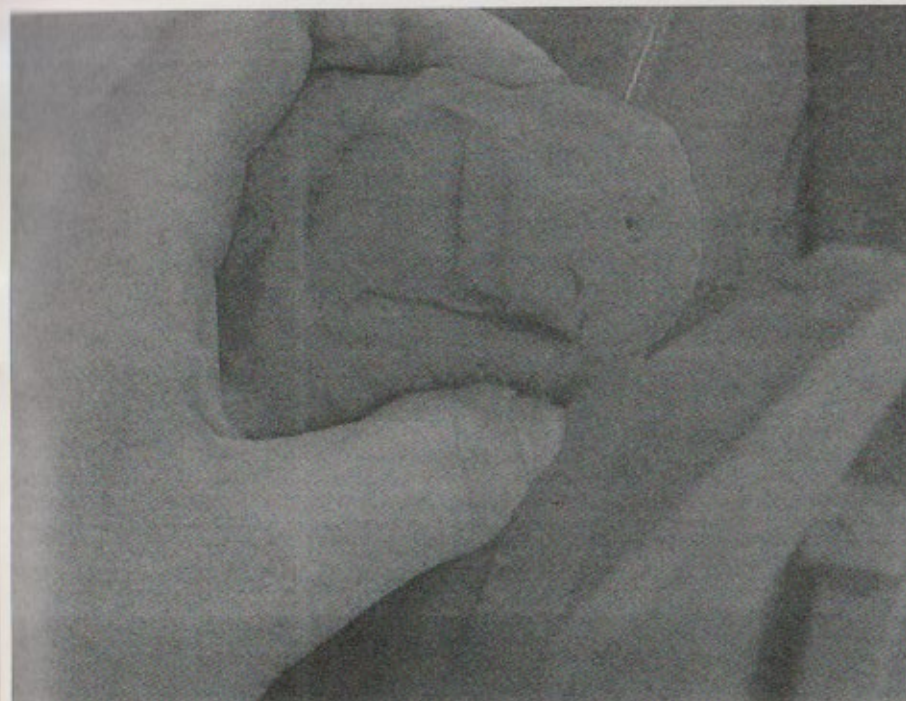


a

kitty maria

interview with

windtunnel



b

full of warmth afterwards. I love being the subject of an art project, although I question whether it is really my function as windtunnel or my aesthetics that interest her.

Special relationship,

I hope

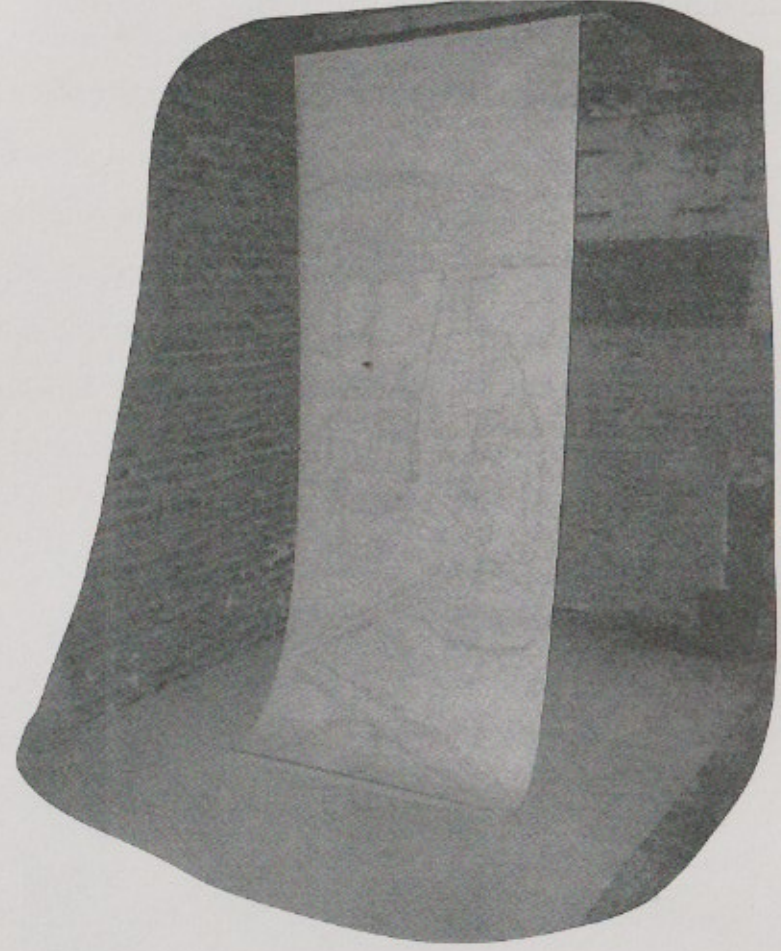
we will

meet again.

The films and installations of Tom Kemp (1988) address the consequential tangle of bureaucratic and economic systems on intimate and immediate relationships. Roleplaying game methodology is used as a generative tool, combining co-design practices, gamification and collaborative storytelling into a deviated method of complexity modelling.

34

TOM KEMP



35

interview with anna sieben,
medical artist and scientific illustrator

about tom kemp

36



a

How was meeting Tom Kemp and what is your
impression of his artistic practice?

37

Meeting Tom was great! I really enjoyed collaborating with him. He has an amazingly energetic and enthusiastic vibe. We had great, crazy fun, and slightly weird conversations, and I love that these conversations are at the centre of his work. Collaborating with him is really inspiring; he encourages me to look at the subjects I am very familiar with from a different perspective, which was an enriching experience.

Could you describe your role in the project and
your collaboration?

At the center of the entire project was the comparison between the building of the sauna and the human anatomy. The conversations between Tom and myself played a huge role in it. We talked a bit about my profession as a medical artist and scientific illustrator, and about my usual working process, and then moved on to map out the building as if it were a human body (using amongst others, a dice game). What organs or structures would the elements in the building represent? Why? And how would they relate to each other? In this analogy, what role would the people in the building play? Tom used film footage he shot during these conversations to make

interview with anna sieben,
medical artist and scientific illustrator

about tom kemp

36



a

How was meeting Tom Kemp and what is your
impression of his artistic practice?

37

Meeting Tom was great! I really enjoyed collaborating with him. He has an amazingly energetic and enthusiastic vibe. We had great, crazy fun, and slightly weird conversations, and I love that these conversations are at the centre of his work. Collaborating with him is really inspiring; he encourages me to look at the subjects I am very familiar with from a different perspective, which was an enriching experience.

Could you describe your role in the project and
your collaboration?

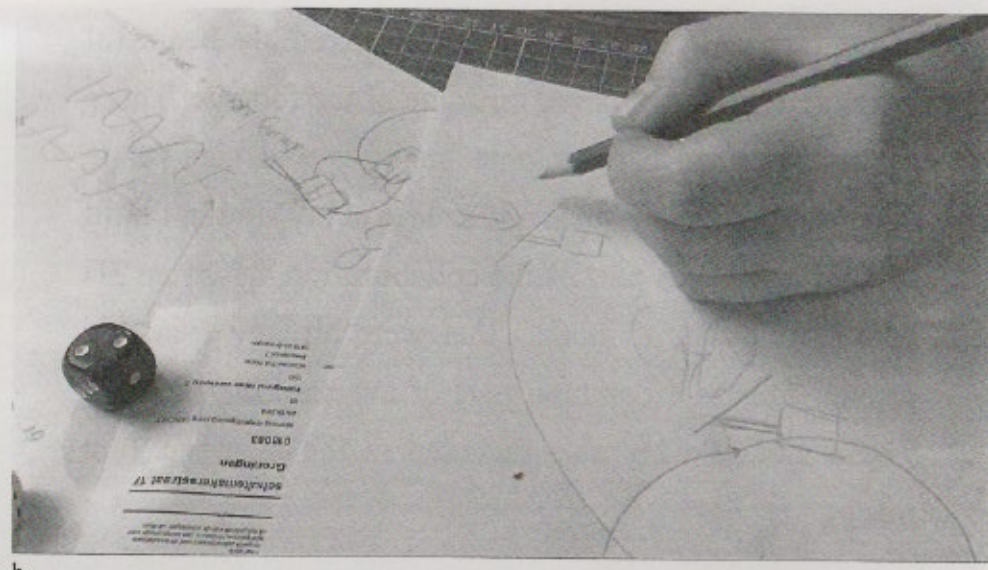
At the center of the entire project was the comparison between the building of the sauna and the human anatomy. The conversations between Tom and myself played a huge role in it. We talked a bit about my profession as a medical artist and scientific illustrator, and about my usual working process, and then moved on to map out the building as if it were a human body (using amongst others, a dice game). What organs or structures would the elements in the building represent? Why? And how would they relate to each other? In this analogy, what role would the people in the building play? Tom used film footage he shot during these conversations to make



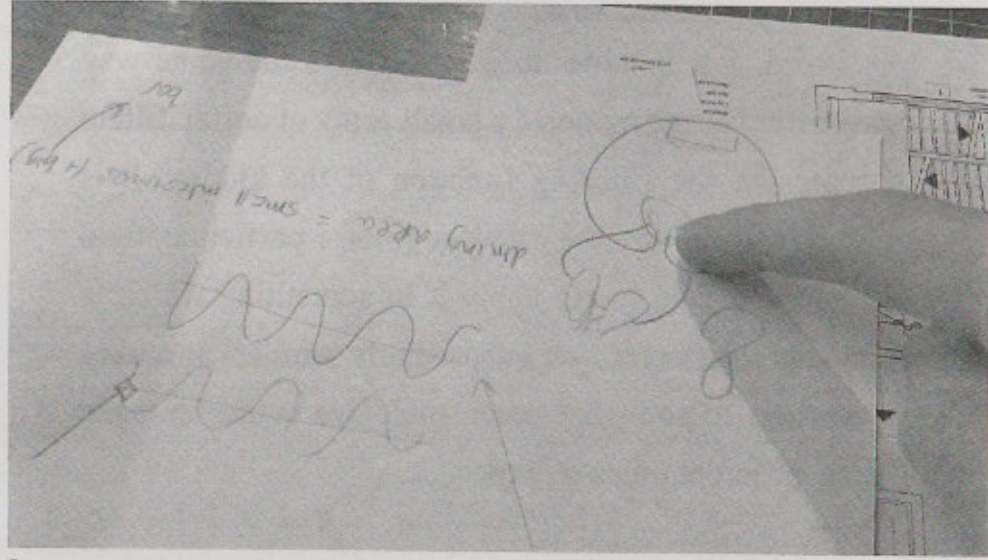
a

a. - c. 'four delvers', tom kemp, video stills

38



b



c

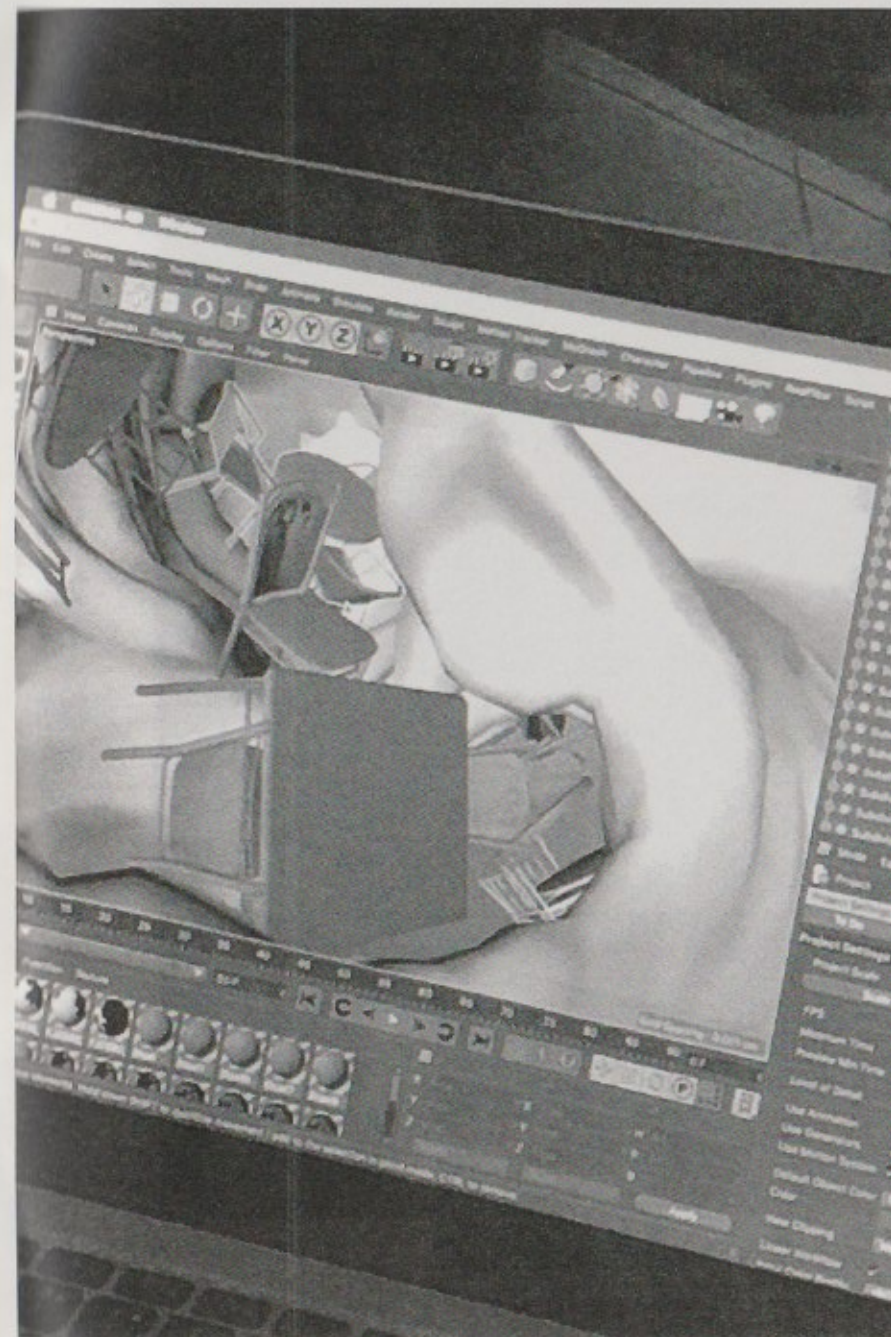
a montage and also created some incredibly beautiful graphite renderings based on some of the footage. These renderings have cartographic qualities and also relate back to our conversations and scenes at my studio. I built two 3D models as part of the collaboration, based on 3D models or parts of models that were already available online. This is a common part of my working process. These models were also included in the montage Tom made.

Did his project change your perspective on your profession as an anatomical illustrator?

Yes it did. I will never look at kidneys the same way again after having modeled a small army of coffee filters to represent the filtering function of the kidney. It is quite refreshing to take knowledge of a particular field or topic and then try to apply it to something which is completely different, yet surprisingly similar! It makes me curious to see what other analogies could be made within different areas of expertise.

How did you experience the building?

I had never been inside the building before, but during our collaboration Tom had shown me the architectural plans of the building and also some photographs of the





a

tom kemp

interview with

anna sieben

different floors, so in a way I kind of knew the building I was entering. I loved the atmosphere inside, it felt like it oozed creativity and I loved seeing how the different artists had all taken the building as a starting point but then arrived at such different interpretations. I am not very familiar with art shows — my world revolves around hospitals, patient communications and research visualisations — so it was very inspiring!



b

a, in process still of 'four delvers', tom kemp / b, sauna floor tiles